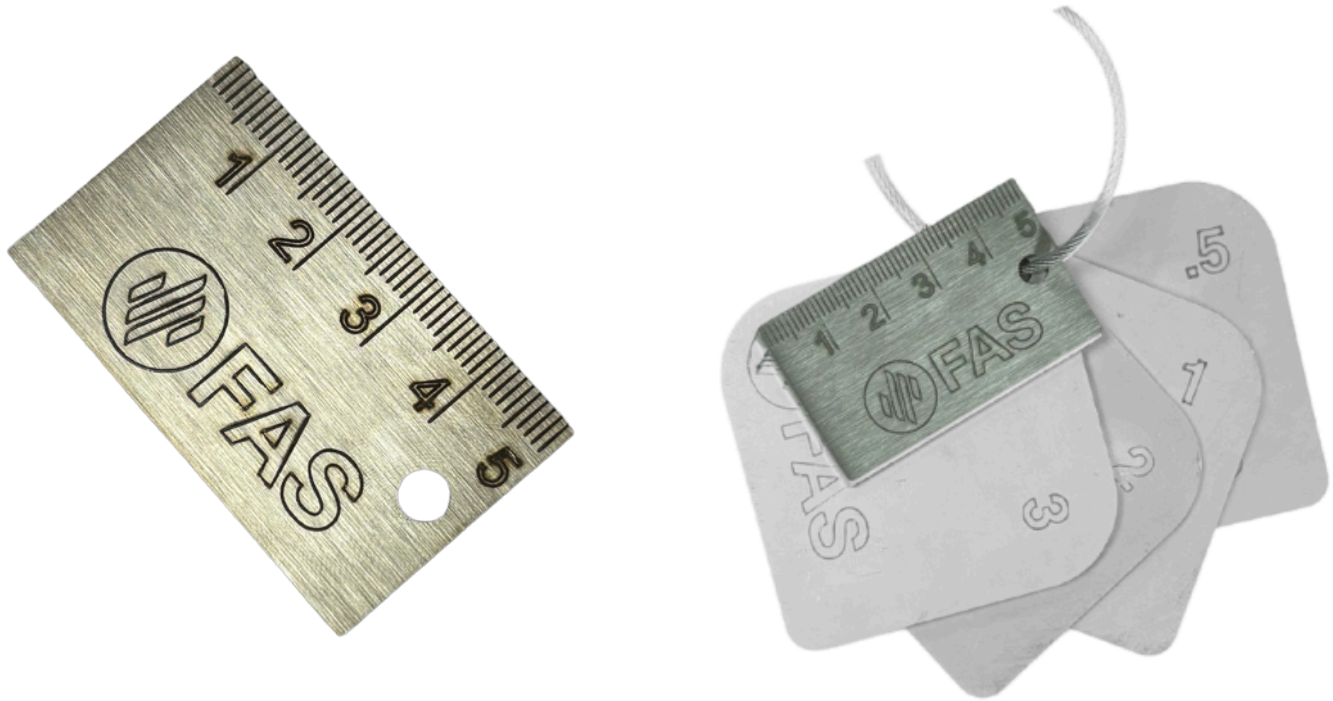


FAS Fire Door Gap Gauge Ruler



Product Description

The FAS Fire Door Gap Gauge Ruler is designed specifically for measuring the gap at the bottom of the door. This 5 cm ruler completes the Gap Gauge set, providing enhanced measurement capabilities to ensure optimal door compliance. Gaps at the bottom of the door should not exceed 3mm when smoke is a requirement for your fire door.

Characteristics

- ✓ High-quality stainless steel construction for durability and resistance to corrosion.
- ✓ Precision laser-cut for accurate measurements and consistent performance.
- ✓ Compact and easy to handle, making it perfect for professional tradespeople and DIY enthusiasts alike.

FAS Fire Door Gap Gauges (including ring and lanyard) are currently sold separately.